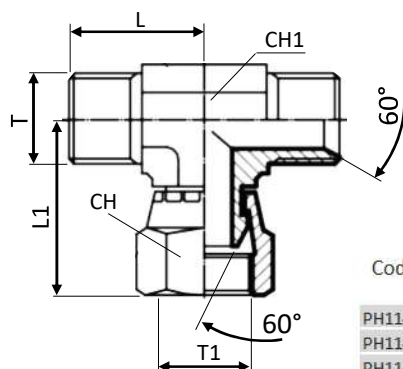
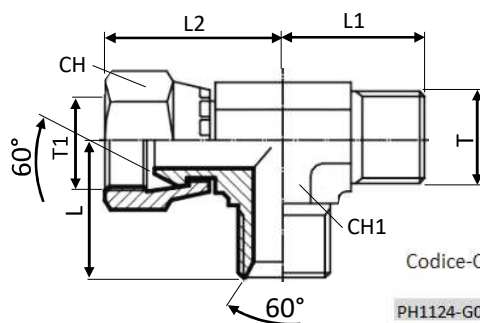


PH1144 CONNETTORE A "T" IN ACCIAIO ZINCATO FILETTO MASCHIO BSPP CON BASE ORIENTABILE FEMMINA
GALVANIZED STEEL MALE TEE BSPP THREAD WITH FEMALE SWIVEL BASE



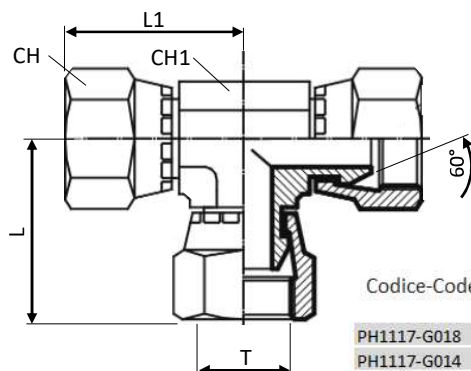
| Codice-Code | CH | CH1 | H | L | L1 | ØT | ØT1 | max Bar | |
|-------------|----|-----|------|----|----|--------|--------|---------|---|
| PH1144-G018 | 14 | 11 | 25 | 21 | - | G1/8" | G1/8" | 250 | 5 |
| PH1144-G014 | 19 | 14 | 33 | 26 | - | G1/4" | G1/4" | 250 | 5 |
| PH1144-G038 | 22 | 19 | 37 | 29 | - | G3/8" | G3/8" | 250 | 5 |
| PH1144-G012 | 27 | 22 | 43 | 34 | - | G1/2" | G1/2" | 200 | 2 |
| PH1144-G034 | 32 | 27 | 53,5 | 41 | - | G3/4" | G3/4" | 160 | 1 |
| PH1144-G100 | 41 | 33 | 60,5 | 45 | - | G1" | G1" | 140 | 1 |
| PH1144-G114 | 50 | 41 | 72,5 | 52 | - | G1"1/4 | G1"1/4 | 120 | 1 |
| PH1144-G112 | 55 | 48 | 91 | 59 | - | G1"1/2 | G1"1/2 | 120 | 1 |

PH1124 CONNETTORE A "T" IN ACCIAIO ZINCATO FILETTO MASCHIO CON LATO FEMMINA GIREVOLE BSPP
GALVANIZED STEEL MALE TEE BSPP THREAD AND ONE SIDE WITH SWIVEL FEMALE THREAD



| Codice-Code | CH | CH1 | L | L1 | L2 | ØT | ØT1 | max Bar | |
|-------------|----|-----|----|----|------|--------|--------|---------|---|
| PH1124-G018 | 14 | 11 | 21 | 20 | 26 | G1/8" | G1/8" | 250 | 5 |
| PH1124-G014 | 19 | 14 | 26 | 27 | 32 | G1/4" | G1/4" | 250 | 5 |
| PH1124-G038 | 22 | 19 | 29 | 30 | 36 | G3/8" | G3/8" | 250 | 5 |
| PH1124-G012 | 27 | 22 | 34 | 37 | 40 | G1/2" | G1/2" | 200 | 2 |
| PH1124-G034 | 32 | 27 | 41 | 40 | 54,5 | G3/4" | G3/4" | 160 | 2 |
| PH1124-G100 | 41 | 33 | 45 | 50 | 55,5 | G1" | G1" | 140 | 1 |
| PH1124-G114 | 50 | 41 | 57 | 52 | 59 | G1"1/4 | G1"1/4 | 120 | 1 |
| PH1124-G112 | 55 | 48 | 49 | 59 | 72,5 | G1"1/2 | G1"1/2 | 120 | 1 |

PH1117 CONNETTORE A "T" IN ACCIAIO ZINCATO FILETTO FEMMINA GIREVOLE BSPP
GALVANIZED STEEL FEMALE TEE BSPP SWIVEL THREAD



| Codice-Code | CH | CH1 | L | L1 | L2 | ØT | ØT1 | max Bar | |
|-------------|----|-----|------|------|----|--------|-----|---------|---|
| PH1117-G018 | 14 | 11 | 25 | 25 | - | G1/8" | - | 250 | 5 |
| PH1117-G014 | 19 | 14 | 29 | 29 | - | G1/4" | - | 250 | 5 |
| PH1117-G038 | 22 | 19 | 34 | 34 | - | G3/8" | - | 250 | 5 |
| PH1117-G012 | 27 | 22 | 40 | 40 | - | G1/2" | - | 200 | 2 |
| PH1117-G034 | 32 | 27 | 42,5 | 45,5 | - | G3/4" | - | 160 | 2 |
| PH1117-G100 | 41 | 33 | 52 | 52 | - | G1" | - | 140 | 1 |
| PH1117-G114 | 50 | 41 | 75,5 | 64 | - | G1"1/4 | - | 120 | 1 |
| PH1117-G112 | 55 | 48 | 91 | 75,6 | - | G1"1/2 | - | 120 | 1 |